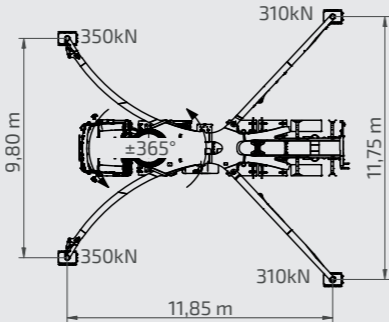
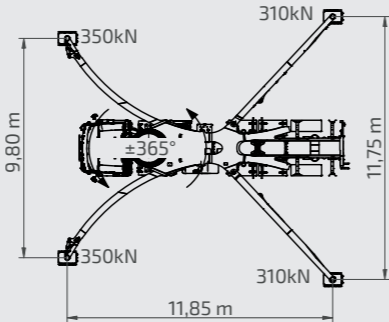


S 56 SXF Truck-mounted concrete pump

Technical data

Performance				
Pumpkit		P 2525		
Drive	l/min	636		
Delivery cylinders	mm	250 × 2,500		
Concrete output max.	m3/h	162		
Pressure on concrete max.	bar	85		
Stroke rate max.	1/min.	22		
Concrete valve		B-ROCK		
Hydraulic system				
Design		offenes System		
Hydraulic tank	l	600		
Boom		56 R		
Delivery line		DN 125		
Length of end hose	m	4.00 (1.00 + 3.00) with end hose DN 125		
Vertical reach	m	55.20		
Reach depth	m	39.80		
Horizontal reach	m	50 m (from centre of turret)		
Net horizontal reach	m	46.23 (from front of outriggers))		
Number of boom sections		5		
Height of the inflexion points	m	4.35 / 16.00 / 25.70 / 35.00/ 45.00		
Slewing range		2 × 365°		
Folding height	m	11.50		
Support				
Outrigger width, front	m	9.80		
Outrigger width, rear	m	11.75		
Outrigger load, front	kN	350		
Outrigger load, rear	kN	310		
				
Chassis (examples*)		Mercedes-Benz Arocs 5046	Mercedes-Benz Arocs 4840	Mercedes-Benz Arocs 5051
Axles configuration		10 × 4	8 × 4	12 × 4
Wheelbase	mm	5,750	6,750	6,350
Length	mm	13,950	13,950	13,990
Miscellaneous				
Water tank	l	610	610	610
Operating weight	t	46.5	< 45	48.5

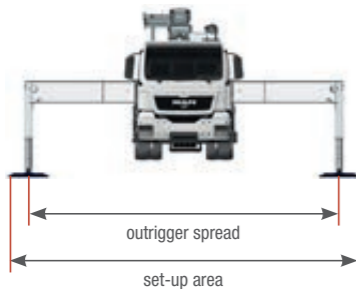
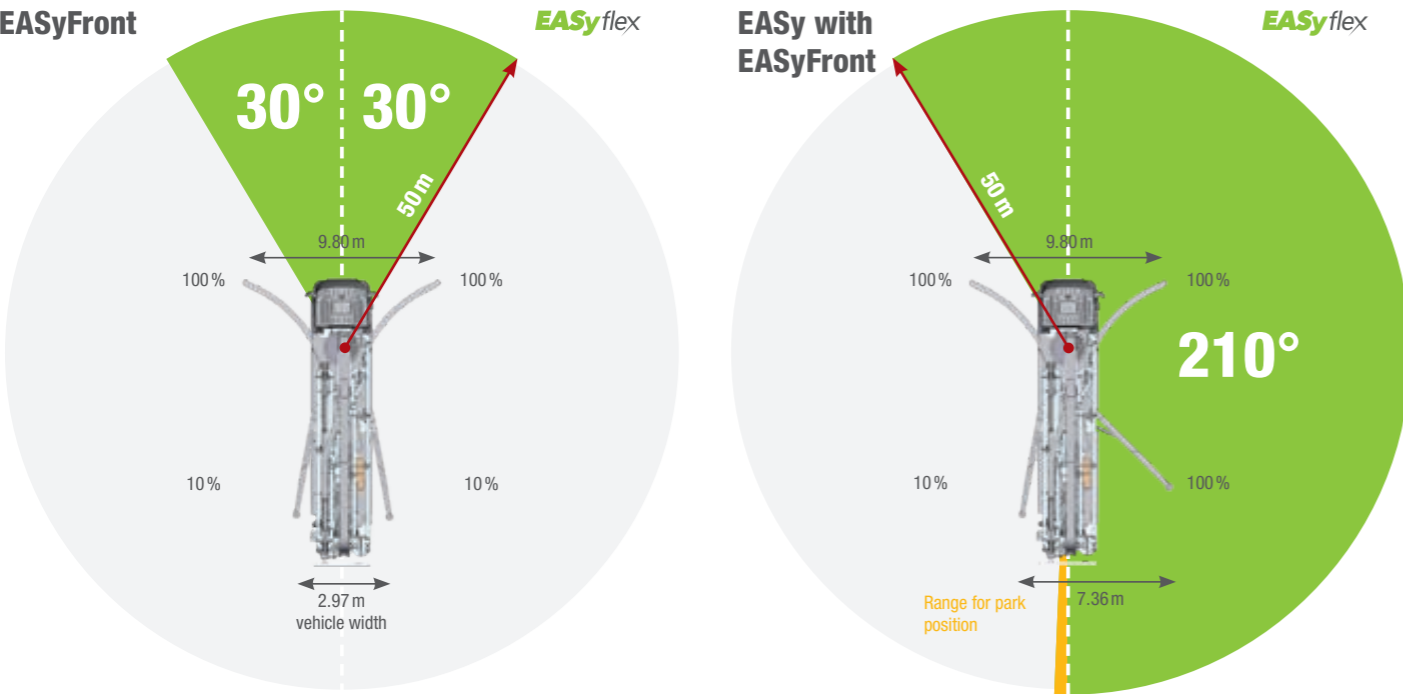
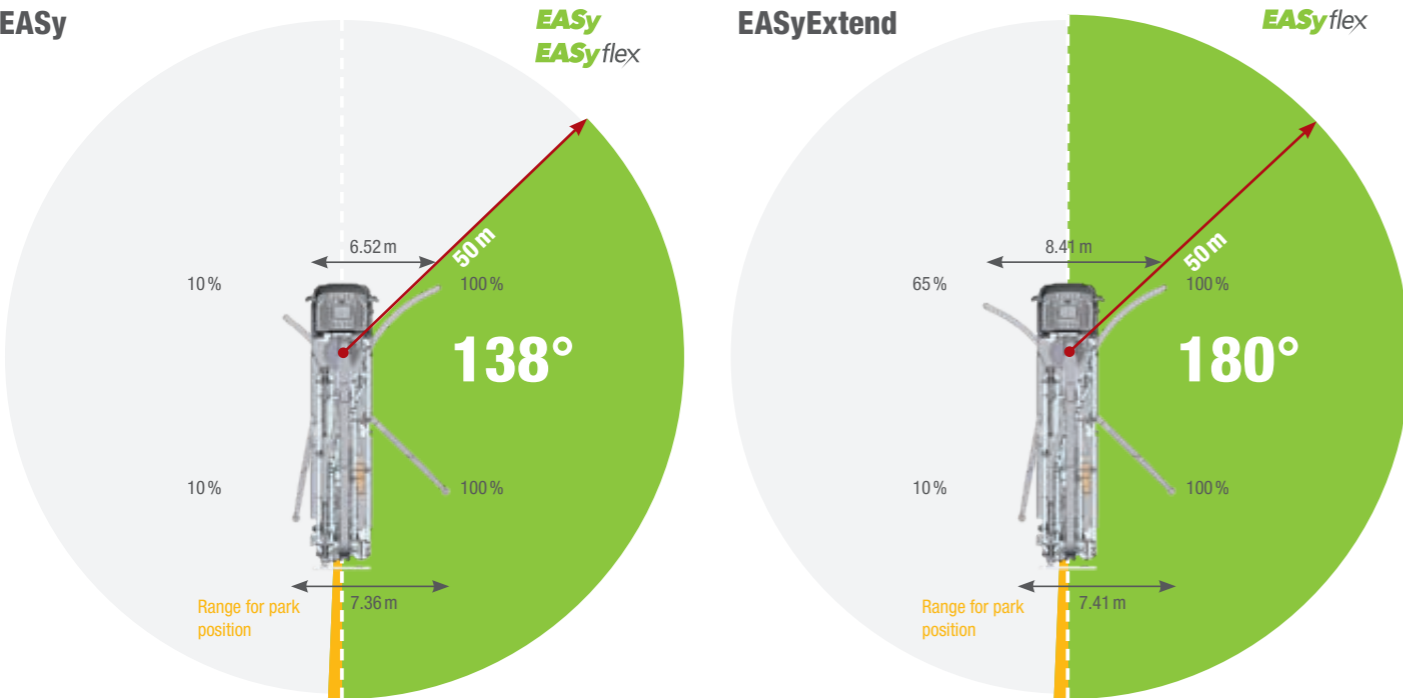


\*Can be mounted on different chassis frames

# EASy and EASyflex



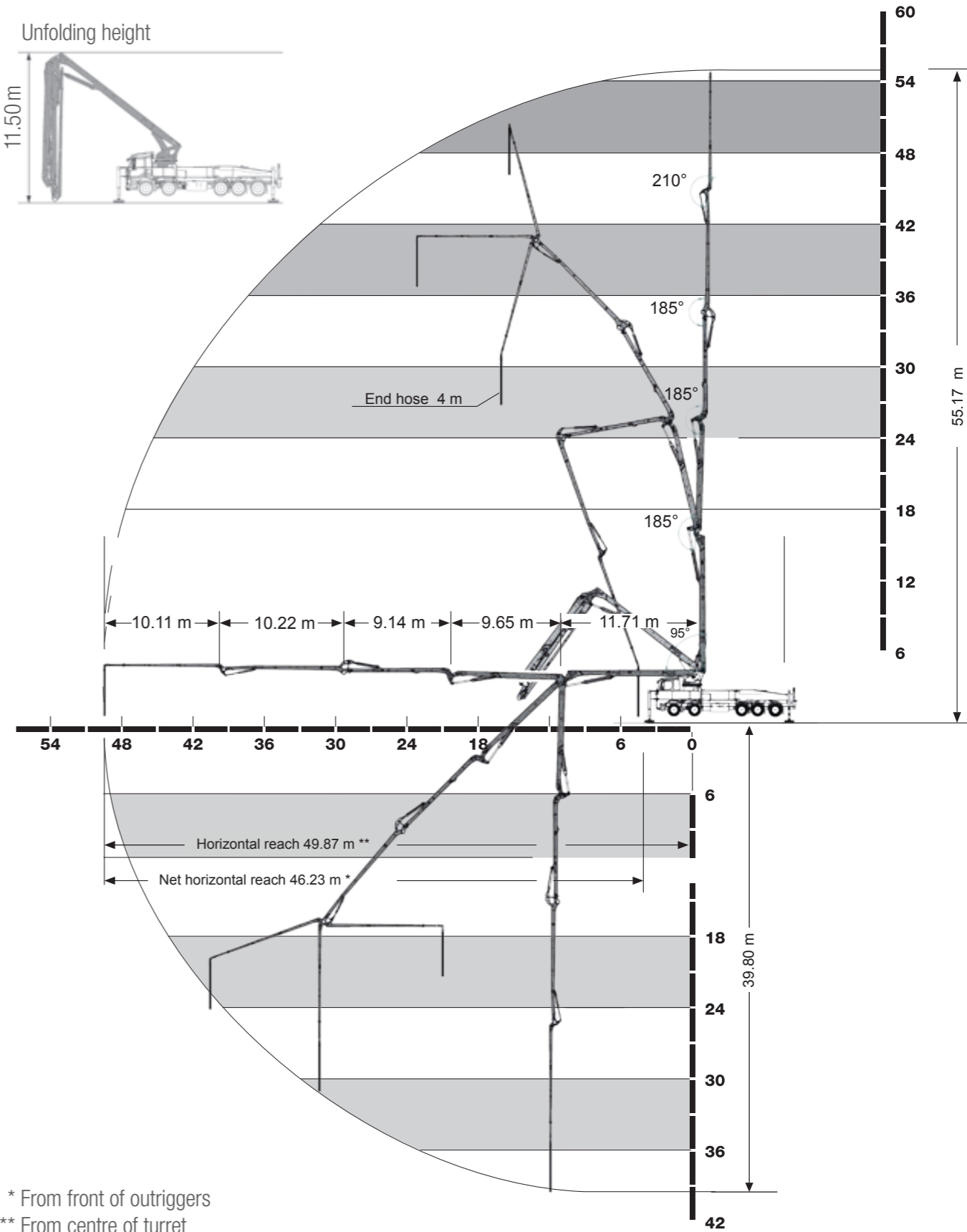
The outrigger systems EASy and EASyflex extend the range of applications of the S 56 SXF. With EASy, the concrete pump can be safely supported on one side, if required, whilst covering a working range of 134°. EASyflex provides further outrigger combinations and as such, more flexibility on the jobsite. In this way, pump applications can be achieved with maximum working safety even in difficult, restricted spaces. More flexibility for more safety.



The outrigger spreads as specified are measured from the centre of the outrigger leg. Any cribbing or underlay timbers must be taken into account when determining the required set-up area.

# S 56 SXF Truck-mounted concrete pump

## Working range



\* From front of outriggers  
\*\* From centre of turret